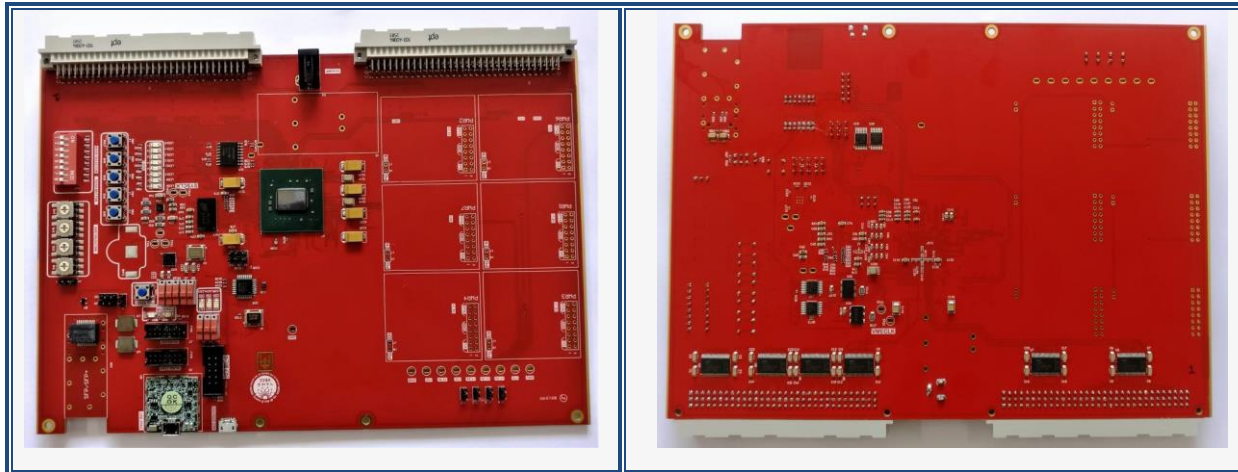




Table 4 – KINTEX 7 FPGA BASED VME FORM FACTOR DIGITAL IO CARD



This board is a Kintex 7 FPGA based 3 Row vertical VME Digital IO Card :-

FPGA

- Kintex 7 FPGA with 1,60,000 logic cells, 600 DSP slices, 8 Gigabit Transceivers
- JTAG Mode and Active Serial Mode – Using serial configuration device PROM for FPGA

DDR3L

- 2 Gb DDR3L SDRAM memory for computation and data buffering.

VME interface vertical Euro Card 3 – Row.

Clock generation & distribution:-

- On board LVDS / CMOS oscillator 200 MHz
- Extremely low RMS jitter 1 to 220MHz Si LAB LVPECL / LVDS Oscillator.

USB interface:-

- Micro USB B Type interface for communication.

SFP+ optical Module interface:-

- Electrical to Optical Giga Bit Ethernet interface using SFP+ Module

Other interfaces or features:-

- USB type programming interface
- DC to DC isolated converters
- On PCB : 4 DIP switches, LEDs for other important signals on PCBs, LED for Configuration Done